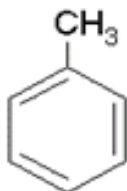


## Toluene HPLC

for use in Liquid Chromatography & Spectrophotometry



**Catalog Number: 13052LC0G**

**Packing Available: 100ml, 500ml, 1L, 2.5L, 4L, 5L, 25L**

Formula	C <sub>6</sub> H <sub>5</sub> CH <sub>3</sub>
Molecular Weight	92.14
CAS No.	108-88-3
Assay	Min. 99.8%

### Max. Limit of Impurities

APHA Color	10
Sulfur compounds (as S)	0.003%
Substances Darkened by H <sub>2</sub> SO <sub>4</sub>	Passes Test
Residue after Evaporation	4 ppm
Water	0.03%
Optical Absorbance at	
285 nm	1.00
286 nm	0.70
288 nm	0.40
293 nm	0.20
300 nm	0.10
335 nm	0.02
350 nm	0.01

### Reference Information

Boiling Point	110.6°C
Density/ 20°C	0.867
Refractive Index/ 20°C	1.497



Highly flammable



Harmful