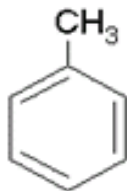


## Toluene GR



**Catalog Number: 13052AR0G**

**Packing Available: 100ml, 500ml, 1L, 2.5L, 4L, 5L, 25L**

Formula	C <sub>6</sub> H <sub>5</sub> CH <sub>3</sub>
Molecular Weight	92.14
CAS No.	108-88-3
Assay	Min. 99.5%

### Max. Limit of Impurities

APHA Color	10
R.A.E.	0.01%
Sulfur compounds (as S)	0.003%
Substances Darkened by H <sub>2</sub> SO <sub>4</sub>	Passes Test
Water	0.05%

### Reference Information

Boiling Point	110.6°C
Density/ 20°C	0.867
Refractive Index/ 20°C	1.497



Highly flammable



Harmful